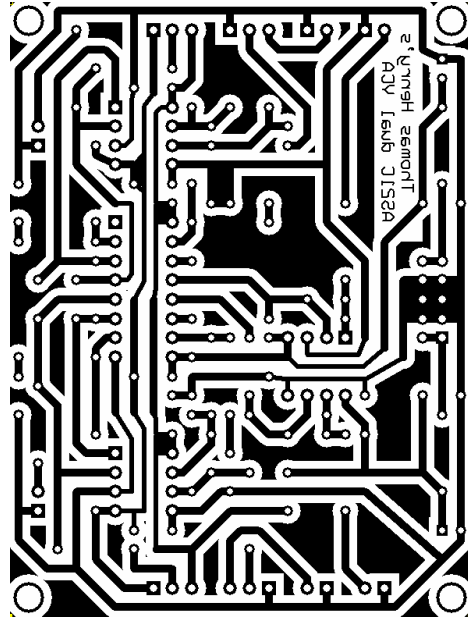
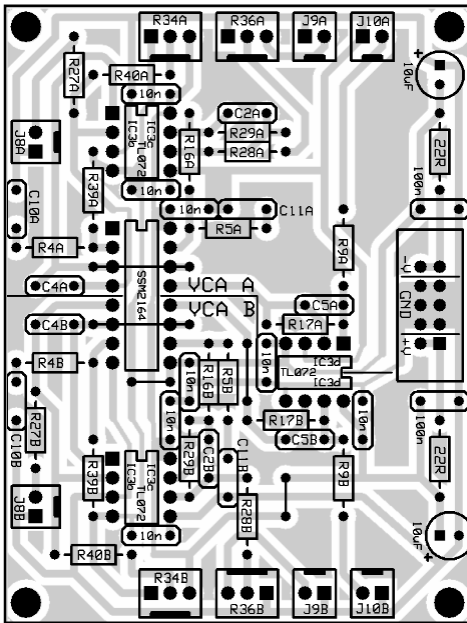


VCA for the 21st Century



This PCB layout utilizes a SSM2164 for two independent VCAs from Thomas Henry's book "An Analog Synthesizer for the 21st Century". For components refer to schematic page 17 (VCA).

The layout omits the following parts of the original circuit:

Linear AM (J7, Atten. R35, R26)

AC/DC switch (S2, C19; could be panel mounted if desired)

Line Out (J11, C20, Atten. R12, R13)

The parts are labeled according schematic, followed by the indicator for the VCA A or B. So all components can be found twice, i.e. R27A for VCA A and R27B for VCA B.

The ICs are labeled with references to the schematic, except the SSM2164. you will find out yourself, I bet.

So have fun building this dual VCA and thanks to Thomas Henry for this circuit...

